

# MARSTEK

Power Anywhere & Anytime

## SATURN-M MICRO INVERTER



### Powerful Features

600W/800W/1000W On-grid  
2 MPPT for 1kW PV Input

2000W On-grid  
4 MPPT for 2kW PV Input



### High Efficiency

99.8% MPPT Efficiency  
96.5% Peak Efficiency



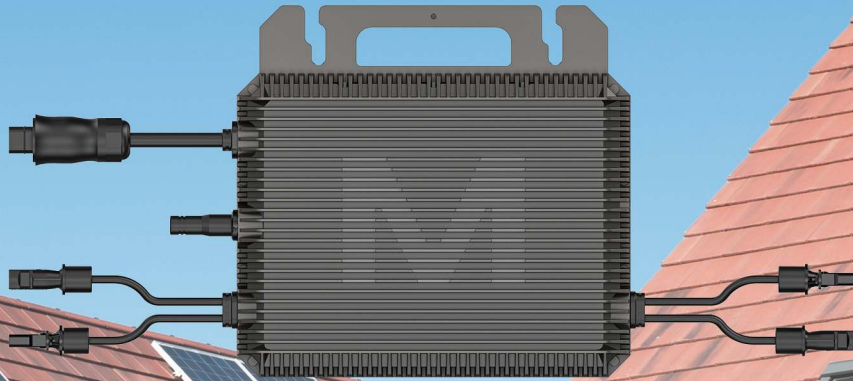
### High Safety

IP67 Waterproof  
10 Years Warranty



### Easy Installation

MC4 Plug & Play



## Marstek Energy Co., Limited

Add: BLDG#A, Changfang Industrial Park, No.2 Guihua 5th Road, Pingshan District, Shenzhen, Guangdong, China

Tel: 86-755-28398778

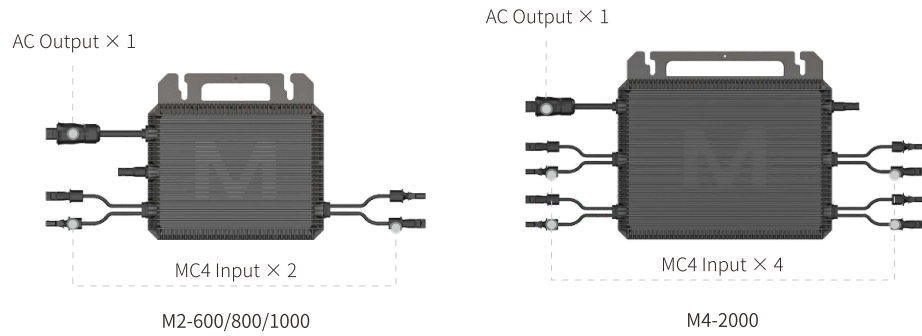
Email: [market@marstekenergy.com](mailto:market@marstekenergy.com)

Web: [www.marstekenergy.com](http://www.marstekenergy.com)



Product Manual

# SPECIFICATIONS



Model	M2-600	M2-800	M2-1000	M4-2000
<b>DC Input</b>				
Max. Input Voltage	60V			
PV Typical Input Power(single-phase)	240W~405W+	320W~540W+	400W~670W+	400W~670W+
Range of Input Operating Voltage	16V~60V			
Range of Mppt Voltage	25V~55V			
Start-up Voltage	22V			
Max. Input Current(single-phase)	10.5 A×2	12.5A×2	14.5A×2	14.5A×4
Max. Short Current(single-phase)	20 A			
MPPT No.	2	2	2	4
MPPT Efficiency	99.80%			
<b>AC Output</b>				
Max. Output Power	600W	800W	1000W	2000W
Nominal Output Voltage(AC)	230V			
Output Voltage Range	180V~275V			
Nominal Output Frequency & Range	50Hz / 45~55Hz, 60Hz / 55~65Hz			
Max. Continuous Output Current(AC)	2.61A	3.48A	4.35A	8.7A
Max. Efficiency	96.5%			
Output Power Factor	>0.99(Default)			
THD	<3%			
<b>General</b>				
Night Power Consumption	<50mW			
Ingress Protection	IP67			
Over Voltage category	PV: II , Mains:III			
Inverter Topology	Isolated			
Operating Ambient Temp.	-40°C~65 °C			
Cooling Strategy	Natural Convection			
Protective Class	I			
Supported Communication Interface	4G / WIFI			
Size	565×251×38mm	565×251×38mm	565×251×38mm	655×311×38mm
Weight	3.85kg	3.85kg	3.85kg	6.4kg
Monitoring Platform	MARSTEK Energy			
Maintenance	10 Year			
<b>Additional Data</b>				
On-grid Connection Standard	VDE 4150/0124,TOR R25,NF EN 50549,C10/110,PTPIREE,CEI0-21,UNE 217001,UNE 217002,G98,A2LA,DAKKS			
Regulatory/EMC	IEC/EN 62109-1/-2,IEC/EN 61000-6-1/-2/-3/-4,EN 301 489-1/17/52,EN 62920,IEC/EN 61000-3-2/-3, EN 50665,EN 300 328,EN 50549-1			